

corbus

icerik

contents
contenu

sayfa *page*

01 / 02

Başkanın Mesajı

President's Message / Présidents de Message

sayfa *page*

03 / 04

Kalite Standartları

Quality Standards / Normes de Qualité

sayfa *page*

05 / 06

Fabrika

Factory / Usine

sayfa *page*

07 / 08

Fabrika

Factory / Usine

sayfa *page*

09 / 10

İç ve Dış Ticaret

Domestic and Foreign Trade / Commerce Intérieur et Extérieur

sayfa *page*

11 / 12

Ürünler Giriş

Products Entrance / D'entrée des Produits

Deformed Bars	sayfa <i>page</i> 13 / 14
Angle Bars / Square Bars	sayfa <i>page</i> 15 / 16
Flat Bars / Round Bars	sayfa <i>page</i> 17 / 18
IPN & UPN / H&I Beams	sayfa <i>page</i> 19 / 20
Wire Rod / Steel Billet	sayfa <i>page</i> 21 / 22
Coils and Sheets	sayfa <i>page</i> 23 / 24
Hollow Sections / Steel Scrap	sayfa <i>page</i> 25 / 26
Contacts	sayfa <i>page</i> 27 / 28

SALUT!

hola! nǐ hǎo!

Privet!

ahn nyeong!

sawa dee-krap!

Ciào!

merhaba!

Hello!

As-Salāmu `Alaykum!

hallo!



■ Merhabalar !

1996 yılında senelik kapasitesi 150.000 mton olan Corbus Çelik San. ve Tic.A.S, ile kare, köşebent, lama, yuvarlak ve nervürlü demir üretiminde tüm ürünleri İskenderun bölgesinde tek tesis bazında imal eden ve işbu imalatlarına ISO sertifikası geçen ilk kuruluş olarak faaliyete geçmiştir.

Gerek idari gerekse yapılan büyük modernizasyon ve kapasite arttırımı ile 2010 yılında Corbus'u ikinci kez kurulmuş şeklinde belirtebilirim. İşbu modernizasyon ve kapasite arttırımı ile çelik üretim kapasitesi ilk etapta 400.000 mton'nun daha sonraki kısa süreli dönemde 500.000 mton'nun üstünde olacak şekilde yapılandırılmıştır. Bunun yanısıra aynı dönemde faaliyete başlayan İnternet A.Ş. ve daha sonra kurulan Corbus Metal LTD şirketlerimiz dış ticarete, Corbus Çelik SAN. ve TİC. A.Ş. ise yurt içi piyasada hızlı şekilde belirli pazar paylarına sahip olarak gerek iç gerek dış piyasalarda güvene dayalı haklı bir yer edinmişlerdir.

İdari bütünlüğü ve prensiplere verdiği değerle firmalarımız, müşterilerine satış öncesi ve sonrasında tam hizmet vererek satılan ürünlerin müşteriye tam fayda sağlmasını temel ilke edinmiştir. Corbus şirketler grubumuz milli sanayimizin gelişmesine katkıda bulunmakta, aynı zamanda da hepimizin yaşadığı çevremize değer vererek işbu konuda büyük hassasiyet göstermektedirler. Kuruluş olarak ana felsefemiz, müşterimize verilen hizmetin dünya çapında bir örnek olarak kabul edilmesidir.



Hepinize teşekkürlerimi sunarım,

Salim METİN
Yön. Kur. Başkanı

THE PARTNER YOU CAN RELY ON



**QUALITY
STANDARDS**

BELIEVE.TRUST / CROIS.CONFIANCE

We believe , without reservation , that our employees-production and management are among the best in the world today. We are proud of the innovation , hard work and dedication they have displayed , and we extend our personal thanks to each of them. Their desire to succeed and ability to achieve excellent levels of performance are powerful advantages to our company.

**NORMES
DE QUALITÉ**

**KALİTE
STANDARTLARI**



**50,000 MT STEEL PRODUCTS
PER MONTH**



**PACKING AND
BUNDLING AS PER
CUSTOMER REQUEST**



**ASSURANCE OF
SATISFACTION**



SAFETY FIRST



**CONTINUOUS AND
ON-TIME DELIVERY**



**ENVIRONMENTALLY
FRIENDLY**



**OVER 5,000 MT
LOADING PER DAY**



**EXPERIENCED
STAFF**

CERTIFICATES:

TSE ISO 9001 QUALITY MANAGEMENT SYSTEMS
ISO 14001 ENVIRONMENTAL MANAGEMENT SYSTEMS
OHSAS 18001 Occupational Health and Safety Zone





FABRIKA

FACTORY - USINE



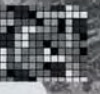
PRODUCTIVITY. HARD WORK

PRODUCTIVITÉ, TRAVAIL ACHARNÉ

We have achieved by concentrating on four specific issues :
placing the needs of the customer first ; producing superior quality products ;
increasing productivity ; and continually reducing costs.

U
S
U
S
S





■ FABRİKA

Yoğun bir modernizasyon ve en son teknolojik yenilenmeden sonra, Corbus demir-çelik tesisleri mükemmel üretim ve maliyet uygulamaları ile, üretim kalitesine üstün rekabet gücünü de katmıştır. Corbus Çelik San. Ve Tic. A.Ş. , İskenderun merkezine 20 km, yükleme limanlarına 2 km'lik mesafede Payas Organize Sanayi Bölgesi içinde bulunmaktadır. Diğer haddehaneler gibi Corbus'un kütük üretimi bulunmamaktadır. Bunun yerine, dünyanın çeşitli kütük üreticilerinden bu ihtiyacımızı gidermekteyiz.

Corbus'un üretimini planlayan idari yapılanmamız ISO 9001 sertifikalı olup, TSE, BS, ASTM, AFNOR,EU, KS, JIS, IS ve bunlar gibi tüm dünya standartlarına uygun olarak nervürlü inşaat demiri ve köşebent, lama demir, kare demir, çeşitli profiller imalatını gerçekleştirmektedir.

Dış ticaret konularında faaliyet gösteren Corbus Metal İç ve Dış Tic. Ltd. Şti. firması ile yurt içi piyasa satışlarında Corbus Çelik San. Ve Tic. A.Ş. firması vasıtası ve dünyaya yayılmış temsilciliklerimiz aracılığı ile geniş ürün yelpazemizin ticareti yapılmaktadır.





■ FACTORY

Through an extensive modernization program and a commitment to the latest technology in the production of steel, Corbus's facilities are designed to continue our competitive position through excellence in production quality productivity and cost management. Corbus Steel Industries, Inc. Located 20 km. west of Iskenderun city centre and 2 km. away from port area, Payas Industrial Zone, Hatay , Turkey. Unlike integrated steel mills or mini mills we do not manufacture steel. Rather, we process steel billet purchased from suppliers around the world.

The management system governing the manufacture of Corbus products is ISO 9001 certified and manufacture reinforcing bar, merchant bar according to world standards, including TSE, BS, ASTM, AFNOR, EU, KS, JIS, IS, etc., Our marketing and distribution segment markets and distributes a wide range of steel products through Corbus Metal Ltd., Corbus Steel Inc. and a network of offices and facilities around the world.



■ USINE

Grâce à un vaste programme de modernisation et un engagement à la dernière technologie dans la production d'acier, L'usine Corbus est conçue pour poursuivre notre position concurrentielle grâce à l'excellence de la productivité et la gestion de qualité et le coût de production. Corbus Acier S.A. Situé à 20 km à l'ouest du centre-ville d'Iskenderun et à 2 km. de distance de la zone portuaire, la zone industrielle de Payas, Hatay, les usines de sidérurgie intégrée Turkey. Contrairement aux mini-acières nous ne fabriquons pas de acier. Au contraire, nous transformons les billettes d'acier achetés auprès de fournisseurs à travers le monde.

Le système de gestion gouvernant la fabrication de produits Corbus est certifiée ISO 9001 et la fabrication des ronds a beton, laminés marchands selon les normes mondiales, y compris les EST, BS, ASTM, AFNOR, l'Union européenne, KS, JIS, IS, etc., Notre marketing et de segmenter les marchés de distribution et distribuer une large gamme de produits d'acier par Corbus Metal Ltd, Corbus Steel S.A. et un réseau d'offices et centres à travers le monde

■ المصنع - الإنتاج

جات نال \ عنصرملا

د بلصل جات نال ايف ايجولونكت لاهيلا تلصوام شذح اب مازت لال او شيدحت ل لماش جمان رب ربع
ةيجات نال او جات نال اةدوج يف زايتم المالا لال خ نم يسفان تال ان عرضو ميودت ل سبروق تاسيسات تميمص
زكرم برغ مك 20 دعب لىل بلصل سبروق عناصر م تاسيسات عقت . فيلاكت ل اةراداو
عناصر فالخ لىل . ايكرت يف ياتاه , سايا ب يف انايم لاقصنم نم مك 2و نوردنكسال اةنيدم
بلصل نابضرق ةجال اع م موقن لب بلصل عنصرن ال نحن , ىرخال اةريغصل عناصر م لال بلصل
م.الاع لاهنا فل تخم يف نيدرولم نم اهوارش ب موقن يت لال

ةدهاش لىل ع زئاح سبروق تاجت نم ةعنصر يف مكاح لال اةرادال ماطن نا ISO9001م تي شيح,
نمضرت يت لال اةيم لال اع ل ريع اع م لاقف و يراجت لال اديح لال وح لىل سرت لال اديح عي نصت BS, TSE
ASTM, AFNOR, EU, KS, JIS, IS, اةح يرش نا . ىرخال اةيم لال اع ل ريع اع م لال نم مهريغ و
ةك رش ربع بلصل تاجت نم نم عساو قاطن عي زوت و قيوس ت ب موقت اني دل عي زوت لال اةيوس ت لال
تاسوسوم لال اةم لال نم ةكبشو سبروق عنصر م, ةدودح م لال اتيم سبروق
م.الاع لال لوح

DOMESTIC AND FOREIGN
TRADE

LOOKING TO THE FUTURE / REGARD VERS L'AVENIR

We are forward-looking company: stronger , more financially viable , and capable of competing with domestic and foreign challengers alike. All aspects of our business are guided by our company's mission of satisfying customer requirements 100 percent of the time. We strive to achieve perfection in every aspect of our business and looking to the future with full of confidence.

CORBUS

www.corbus.com.tr

İÇ SATIŞ - DOMESTIC SALES

■ CORBUS ÇELİK SAN. VE TİC.A.Ş.

CORBUS Çelik Sanayi ve Ticaret A.Ş. fabrikamızda imal edilen ürünlerin ve lokal üreticilerin demir çelik mamüllerinin yurt içi satış ve pazarlaması için kurulmuş bir şirkettir. Şirket merkezi Fabrika ile aynı yerde olup müşterilerinin tüm demir çelik mamülü ihtiyaçlarını, şirket bünyesinde çalışan pazarlama tecrübesi uzun yıllara dayanmış elemanlar ile müşteri odaklı çalışmakta ve mal tedariklerini zamanında eksiksiz yerine getirmektedir.



CORBUS Çelik Sanayi ve Ticaret A.Ş. is founded to be active in local trade, specially commercializing CORBUS Steel Industry's production and all other local producers' steel products. The company center is located in the same factory area and its highly experienced marketing stuff are concentrated on the satisfaction of the buyers, and supply their needs of steel products on time.



La societe de commerce interieure Acier CORBUS a ete fonde pour etre active dans le domaine de la commerce interieure en commercialisant les produits de l' usine de CORBUS ainsi que les autres produits des producteurs locaux.Acier CORBUS situee dans le meme endroit de l'usine de CORBUS, avec ses employes de marketing d'une grande experince est destinee a satisfaire les besoins de la clientel.



DIŞ TİCARET - FOREIGN TRADE

■ CORBUS Metal İç ve Dış Tic. Ltd. Şti.

CORBUS demir çelik konusunda Türkiye 'nin önde gelen dış ticaret şirketlerinden biridir. CORBUS 'un ana faaliyet konusu demir çelik ürünlerinin dış pazarlanması ve ticareti olup buna bağlı diğer ürünler ve demir dışı metal ticareti şeklindedir.

Şirket merkezi Kabataş - İstanbul 'dadır. CORBUS müşterilerinin ihtiyacını tam olarak karşılanabilmesi için geniş ürün yelpazesini müşteri talepleri doğrultusunda temin edilmesi konusunda yapılandırmıştır.Yurtdışındaki bağlantılarımız ve global kaynaklara erişmemizdeki deneyimimiz, demir çelik, demir dışı metaller, hurda ve teknik destek konularında başarımızın temel unsurlarıdır.



CORBUS are one of the main steel supplier companies in Turkey. CORBUS misson is to manufacture and to market steel, other metals and related products and meet our customers needs. We are headquartered in Istanbul, CORBUS aims to create value by offering a differentiated product range with need of customer focusing and fully cooperation and satisfying basis. Our numerous locations and using our global resources engage in the marketing and trading of steel products, nonferrous metals, scrap and technical products.



Corbus est l'un des exportateurs majeurs d'acier en Turquie. La mission de Corbus est la commercialisation et la distribution internationale d'acier, autres metaux et produits metalliques et satisfaire la demande du clientele. Notre office est à Istanbul, Turquie. Le but de Corbus est d'offrir une gamme de production variee sur la satisfaction de l'acheteur.Par nos divers locations mondiales, et par mettant en service nos sources globales nous maitrisons le commerce et le marketing des produits siderurgiques, des metaux non ferreux, ferraille et des produits techniques.



PRODUCTIVITY.HARD WORK

PRODUCTS

the partner you can RELY on
 RECTANGULAR TUBING Steel Billets T-Bars
 ANGLE BARS UPN IPEAA
 HOT & COLD GALVANIZED COILS Round Bars
 Raw Materials GALVANIZED TRAPEZOIDAL SHEETS
 Wire Rods SQUARE BARS WATER & GAS PIPES
 BARS RECTANGULAR TUBING
 E-Angles UPN Steel Billets
 IPN Galvanized Tubes
 IPE IPEA Steel Scrap
 IPEAA DE-BARS
 T-BARS TUBING & PIPES
 WATER & GAS PIPES SQUARE BARS
 RAW MATERIALS Wire Rods
 Steel Billets RAW MATERIALS
 hot rolled BARS
 chequered DEFORMED
 plates BARS
 Galvanized Hollow
 Tubes Sections
 Flat Bars
 UPN Merchant Bars
 HOLLOW SECTIONS IPEAA
 Steel Wires
 (Black & Galvanized)
 Plain Bars Turn-Key
 SQUARE BARS Round Bars
 T-Bars E-Angles
 Deformed Bars Pig Iron
 Coils & Sheets
 Black & Galvanized Tubes
 Steel Scrap
 Merchant Bars
 Steel Plant and
 EQUIPMENT
 Solutions For
 Rolling Mills and
 Melting Shops
 hot dip
 galvanized coils
 ANGLE BARS IPE
 SQUARE TUBING
 Hollow Sections
 hot rolled
 chequered
 plates
 Wire Rods
 E-Angles
 T-Bars
 Black & Galvanized Tubes
 WATER & GAS PIPES
 COLD
 ROLLED COILS
 E-Angles
 IPEAA
 UPN
 DEFORMED BARS
 Hot & Cold Galvanized Coils Wire Rods IPE
 SQUARE BAR Stubing & pipes
 DEFORMED STEEL BARS

*Listed products and sizes are only the most commonly used in the industry. Specific sizes may be offered for special projects.

DEFORMED BARS



QUALITY:

ASTM , DIN , BS , TS , JIS
AFNOR , SI AND OTHER INT STANDARDS.

DIAMETERS:
8mm-50mm \approx 3/8-10/8 inch

DEFORMED BARS - ROND A BETON

ASTM A615 (Metric) BS 4449		ASTM A615 (Inch)		KSD 3504 JIS G 3112		Spanish UNE 36-068 Portuguese NP 332 French NF 35-016		Canadian CAN CSA-G30 Jamaican JS 33	
mm	kg/m	inch	kg/m	D	kg/m	mm	kg/m	mm	kg/m
8	0.395	3/8	0.559	10	0.560	8	0.395	10	0.785
10	0.616	4/8	0.994	13	0.995	10	0.617	15	1.570
12	0.888	5/8	1.552	16	1.560	12	0.887	20	2.355
14	1.209	6/8	2.235	19	2.250	14	1.21	25	3.295
16	1.579	7/8	3.041	22	3.040	16	1.58	30	5.495
18	2.000	8/8	3.973	25	3.980	18	2.000	35	7.850
20	2.466	9/8	5.059	29	5.040	20	2.47		
22	2.984	10/8	6.403	32	6.230	25	3.85		
25	3.854			35	7.510	32	6.31		
29	4.834			41	10.500				
32	6.313								
36	7.990								
40	9.864								
50	15.413								

COUNTRY	STANDARD	QUALITY / QUALITE	CHEMICAL ANALYSIS / ANALISE CHIMIQUE (Max) %							MECHANICAL FEATURES / CARACTERISTIQUES MECANIKES (Min.) %				
			C	Mn	Si	P	S	N	CE	Yield Strength Re: N/mm ² (Kg/mm ²)	Tensile Strength Re: N/mm ² (kg/mm ²)	(Ratio) Rm/Re	Elongation %	
TURKEY	TS 708	I-a	0.25			0.050	0.050				220 (22.4)	340 (34.7)	1.20	18 (Lo=10xd)
	(1996)	III-a*	0.40			0.050	0.050				420 (42.8)	500 (51.0)	1.10	8-28(mm) : 12
	(1998)	III-a*/Sismik				0.050	0.050				420 (42.8) - 546 (55.69)	500 (51.0)	1.15	8-28(mm) : 12
ENGLAND	BS 4449// Coil Feedstock for BS	GR 250	0.25			0.060	0.060	0.012	0.42		250 (25.5)	Re x 1.15	1.15	22 (Lo=5xd)
	BS 4449: 1197	GR 460	0.25			0.050	0.050	0.012	0.51		460 (46.92)	Re x 1.08	1.08	14
	BS 4449: 2005	5008	0.22			0.050	0.050	0.012	0.50		500 (51.0)	Re x 1.08	1.08	Agf % : 5 (min.)
SINGAPORE	SS 2 : PART 1: 1999	PB 300	0.22	1.60	0.60	0.060	0.060	0.012	0.50		300 (30.6)	330 (33.7)	1.10	16 (Lo=5xd)
											Rpo.²			
	SS 2: PART :2:	RB 500W	0.22	1.60	0.60	0.050	0.050	0.012	0.50		500 (51)	500 (56.1)	1.05	14
			0.25 (032 VE ÜZERİ: CE: 0.55% MAX.)											Agf % : 5 (min.)
JAPAN	JIS	SR 24				0.050	0.050				235 (24)	382-520 (39-53)		d < 25 d > 25
		G 3112				0.050	0.050				294 (30)	441-598 (45-61)		20 24
		SD 30A				0.050	0.050				294 (30)	441-598 (45-61)		18 20
	(1987-90)	SD 30B	0.27	1.50	0.55	0.040	0.040				284-302 (35-40)	441 (45)		16 18
	1997	SD 35	0.27	1.60	0.55	0.040	0.040		0.55		343-441 (35-35)	490 (50)		18 20
		SD40	0.29	1.80	0.55	0.040	0.040		0.55		392-510 (40-52)	559 (57)		16 18
	SD50	0.32	1.80	0.55	0.040	0.040		0.60		490-528 (50-64)	618 (63)		12 14	
USA	ASTM A615/96a A 615M/96a	GR40				0.060	0.050				(40000) Psi (30.6)	300 (70000) Psi (51.0)	500	11 - 12
		GR60				0.060	0.050				(60 000) Psi (42.8)	420 (90 000) Psi (63.3)	620	7 - 9
USA (NEW VERSION)	ASTM A615/04a A615M/04a	GR40				0.060	0.050				(40000) Psi (28.6)	280 (60000) Psi (42.84)	420	11 - 12
		GR60				0.060	0.050				(60000) Psi (42.8)	420 (90000) Psi (63.3)	620	7 - 9
USA	ASTM A 706 A 706 M	GR60	0.30	1.50	0.50	0.035	0.045		0.55		(60000) Psi 420 (42.8) (78000) Psi 540 (55.8)	(80000) Psi (56.1)	550	1.25 10 - 14
FRANCE	NF A35-016 (1986)	FeE 400	0.22			0.050	0.050	0.012	0.50		400 (40.8)	440 (44.8)	1.05	14
														Agf % : 5 (min.)
	NF A35-016 (1996)	FeE 500-3	0.22			0.050	0.050	0.012	0.50		500 (51.0)	540 (55.1)	1.08	Agf % : 5 (min.)
GERMANY	DIN 488 (1986)	Bst 220-340			0.60	0.050	0.050		0.50		220 (22.4)	340 (34.7)		18
		Bst 420 S	0.22			0.050	0.050	0.012	0.50		420 (42.8)	500 (51.0)	1.05	10 (Lo=10xd)
		Bst 500 S	0.22			0.050	0.050	0.012	0.50		500 (51.0)	550 (56.1)	1.05	10
GREECE	ELOT 971	S 400S	0.22			0.050	0.050	0.012	0.50		400 (40.8)	440 (44.9)	1.10	14 (Lo= 5xd)
	ELTO 971	S 500S	0.22			0.050	0.050	0.012	0.50		500 (51.0)	550 (56.1)	1.10	12 (Lo=5xd)
	ELOT 959	S 220			0.60	0.050	0.050		0.50		220 (22.4)	340 (34.7)		24 (Lo=5xd)
	ELOT 1421-3	B500C	0.22			0.050	0.050	0.012	0.50		500 (51.0)	340 (34.7)		
	TS 10081-B500C	Sismik Standart									Re reel / Re nominal <= 1.25	575 (58.65)		Agf % : 7.5 (min.)
SPAIN	UNE 36 068-94 (1996)	B 400 S	0.22			0.050	0.050	0.012	0.50		400 (40.8)	440 (44.9)	1.05	14 (Lo=5xd)
		B 500 S	0.22			0.050	0.050	0.012	0.50		500 (51.0)	550 (56.1)	1.05	12 (Lo=5xd) / Agf %5 (min.)
	UNE 36 065-2000	B 500 SD	0.22			0.050	0.050	0.012	0.50		500 (51.0)	575 (58.65)	<=1,15	16 (Lo=5xd)
		sismik standart									Re reel / Re nominal <= 1.25		<=1,35	Agf % : 8 (min)
PORTUGAL	E449-98LNEC	A 400 NR	0.22			0.050	0.050	0.012	0.50		400 (40.8)	460 (46.92)	1.08	Agf % : 5 (min)
	E450-98LNEC	A 500 NR	0.22			0.050	0.050	0.012	0.50		500 (51.0)	550 (56.1)	1.08	Agf % : 5 (min)
	E455-2002 LNEC	A 400 NR SD	0.22			0.050	0.050	0.012	0.50		400 (40.8) - 480 (48.96)	Rm/Re:1,15-1,35		Agf % : 8 (min)
	E460-2002 LNEC	A 500 NR SD	0.22			0.050	0.050	0.012	0.50		500 (51.0) - 600 (61.2)	Rm/Re:1,15-1,35		Agf % : 8 (min)
NS 3576-3/97	B500C	0.22	1.60	0.60	0.050	0.050	0.012	0.50		500 (51.0)	575 (58.7)	1.15	Agf % : 8 (min)	
SWEDEN	B500BT	0.22	d< 20mm		0.050	0.050	0.012	0.50			500 (51.0)		1.08	Agf % : 5 (min)
	SS-ENV 10080		0.20	d> 20mm		0.050	0.050	0.012	0.50		500 (51.0)		1.08	Agf % : 5 (min)
SWITZERLAND	sia 262&262/1 (03)	B500BT	0.22			0.050	0.050	0.012	0.50		500 (51.0)	500x1,08	1.08	Agf % : 5 (min)
ITALY	UNI	Fe B 44 k	0.22			0.050	0.050	0.012	0.50		430 (43.9) fy/430<1,35	540 (55.1)		12 (Lo=5xd)
ROMANIA	STAS-438/1-89	PC 52	0.22	1.60	0.55	0.045	0.045				8-14MM 355 (36.21) // 16-28 345 (35.19)// 32-40MM 335(34.17)	510 (52.02)		20 (Lo=5xd)
		PC 40	0.27	1.60	0.55	0.045	0.045		0.50		8-12MM 420(42.84)//14-28 405(41.31) // 32-40MM 395(40.29)	590 (60.18)		16 (Lo=5xd)
		OB 37	0.23	0.75	0.07	0.045	0.045				8-12MM 255(26.01) // 14-40MM 235 (23.97)	360 (36.72)		25 (Lo=5xd)
POLAND	PN-ISO 6935-2: 1998 (ACC. TO DIN 488)	Bst 500 S	0.22			0.050	0.050	0.012	0.50		500 (51.8)	550 (56.1)	1.05	10
BULGARIA	BDS EN 10080-2005	T-IVB	0.22			0.050	0.050	0.012	0.50		500 (51.0) - 650 (66.3)	550 (56.1)	1.08	14 (Lo=5xd)
		T-IVC	0.22			0.050	0.050	0.012	0.50		500 (51.0) - 650 (66.3)	550 (56.1)	1.15	14 (Lo=5xd)
											500 (51.0)	550 (56.1)		
HOLLAND	NEN 6008	EB 500 HW	0.22		0.05	0.050	0.012	0.05			Akma ve Çekme Max Sapma kS8:50N/mm²			Agf % : 3.5 (min)
											Akma ve Çekme Max Sapma kS8:50N/mm²			Sapma 2.5

ANGLE BARS



QUALITY:

DIN 17100 , ASTM A36,
 ASTM A529 GR 60 ,
 FEE 360 B , S235JR ,
 S275JR , S355JR AND
 OTHER INT. QUALITIES



ROLLED STEEL EQUAL ANGLES / Dimensions and Properties

Size A x B (mm x mm)	Thickness (mm)	Sectional Area (cm ²)	Nominal weight kg/m	Modul of Section (cm ⁴)
19 X 19	1.9	0.69	0.538	0.3
	2.0	0.72	0.565	0.3
20 X 20	3.0	1.12	0.9	0.3
	4.0	1.45	1.1	0.4
25 X 25	3.0	1.41	1.1	0.4
	4.0	1.84	1.4	0.6
	5.0	2.25	1.8	0.7
30 X 30	3.0	1.73	1.4	0.6
	4.0	2.26	1.8	0.8
	5.0	2.77	2.2	1.0
35 X 35	3.0	2.03	1.6	0.9
	4.0	2.66	2.1	1.2
	5.0	3.27	2.6	1.4
40 X 40	3.0	2.34	1.8	1.2
	4.0	3.07	2.4	1.6
	5.0	3.78	3.0	1.9
45 X 45	3.0	2.64	2.1	1.5
	4.0	3.47	2.7	2.0
	5.0	4.28	3.4	2.5
50 X 50	3.0	2.95	2.3	1.9
	4.0	3.88	3.0	2.5
	5.0	4.79	3.8	3.1
55 X 55	3.0	3.26	2.6	2.2
	4.0	4.36	3.4	2.9
	5.0	5.45	4.2	3.6
60 X 60	3.0	3.57	2.8	2.4
	4.0	4.76	3.7	3.2
	5.0	5.94	4.6	4.0
65 X 65	3.0	3.88	3.0	2.7
	4.0	5.16	4.0	3.6
	5.0	6.44	5.0	4.5
70 X 70	3.0	4.19	3.3	3.0
	4.0	5.66	4.4	4.0
	5.0	7.13	5.5	5.0
75 X 75	3.0	4.50	3.5	3.3
	4.0	6.06	4.7	4.4
	5.0	7.62	5.9	5.5
80 X 80	3.0	4.81	3.7	3.6
	4.0	6.46	5.0	4.7
	5.0	8.11	6.3	5.8
85 X 85	3.0	5.12	3.9	3.9
	4.0	6.86	5.3	5.0
	5.0	8.59	6.7	6.1
90 X 90	3.0	5.43	4.1	4.2
	4.0	7.26	5.6	5.4
	5.0	9.08	7.1	6.6
95 X 95	3.0	5.74	4.3	4.5
	4.0	7.66	5.9	5.7
	5.0	9.57	7.4	6.9
100 X 100	3.0	6.05	4.5	4.8
	4.0	8.06	6.2	6.1
	5.0	10.06	7.8	7.4
105 X 105	3.0	6.36	4.7	5.1
	4.0	8.46	6.5	6.4
	5.0	10.55	8.2	7.7
110 X 110	3.0	6.67	4.9	5.4
	4.0	8.86	6.8	6.7
	5.0	11.04	8.6	8.0
115 X 115	3.0	6.98	5.1	5.7
	4.0	9.26	7.0	7.0
	5.0	11.53	8.9	8.3
120 X 120	3.0	7.29	5.3	6.0
	4.0	9.66	7.3	7.3
	5.0	12.02	9.2	8.6
125 X 125	3.0	7.60	5.5	6.3
	4.0	10.06	7.6	7.6
	5.0	12.51	9.5	8.9
130 X 130	3.0	7.91	5.7	6.6
	4.0	10.46	7.8	7.9
	5.0	12.99	9.8	9.2
135 X 135	3.0	8.22	5.9	6.9
	4.0	10.86	8.0	8.2
	5.0	13.48	10.0	9.5
140 X 140	3.0	8.53	6.1	7.2
	4.0	11.26	8.3	8.5
	5.0	13.87	10.4	9.8
145 X 145	3.0	8.84	6.3	7.5
	4.0	11.66	8.6	8.8
	5.0	14.26	10.6	10.1
150 X 150	3.0	9.15	6.5	7.8
	4.0	12.06	8.9	9.1
	5.0	14.65	11.0	10.4
155 X 155	3.0	9.46	6.7	8.1
	4.0	12.56	9.2	9.4
	5.0	15.14	11.3	10.7
160 X 160	3.0	9.77	6.9	8.4
	4.0	12.86	9.6	9.7
	5.0	15.53	11.6	11.0
165 X 165	3.0	10.08	7.1	8.7
	4.0	13.16	9.7	10.0
	5.0	15.82	11.8	11.3
170 X 170	3.0	10.39	7.3	9.0
	4.0	13.56	10.0	10.3
	5.0	16.21	12.1	11.6
175 X 175	3.0	10.70	7.5	9.3
	4.0	14.06	10.3	10.6
	5.0	16.79	12.4	11.9
180 X 180	3.0	11.01	7.7	9.6
	4.0	14.56	10.6	10.9
	5.0	17.29	12.7	12.2
185 X 185	3.0	11.32	7.9	9.9
	4.0	14.96	10.9	11.2
	5.0	17.68	13.0	12.5
190 X 190	3.0	11.63	8.1	10.2
	4.0	15.36	11.3	11.5
	5.0	18.07	13.4	12.8
195 X 195	3.0	11.94	8.3	10.5
	4.0	15.76	11.6	11.8
	5.0	18.46	13.7	13.1
200 X 200	3.0	12.25	8.5	10.8
	4.0	16.06	11.9	12.1
	5.0	18.75	14.0	13.4
205 X 205	3.0	12.56	8.7	11.1
	4.0	16.56	12.2	12.4
	5.0	19.24	14.3	13.7
210 X 210	3.0	12.87	8.9	11.4
	4.0	16.86	12.5	12.7
	5.0	19.53	14.6	14.0
215 X 215	3.0	13.18	9.1	11.7
	4.0	17.16	12.8	13.0
	5.0	19.82	14.9	14.3
220 X 220	3.0	13.49	9.3	12.0
	4.0	17.66	13.1	13.3
	5.0	20.31	15.2	14.6
225 X 225	3.0	13.80	9.5	12.3
	4.0	18.16	13.4	13.6
	5.0	20.79	15.5	14.9
230 X 230	3.0	14.11	9.7	12.6
	4.0	18.66	13.7	13.9
	5.0	21.28	15.8	15.2
235 X 235	3.0	14.42	9.9	12.9
	4.0	19.16	14.0	14.2
	5.0	21.77	16.1	15.5
240 X 240	3.0	14.73	10.1	13.2
	4.0	19.56	14.3	14.5
	5.0	22.16	16.4	15.8
245 X 245	3.0	15.04	10.3	13.5
	4.0	20.06	14.6	14.8
	5.0	22.64	16.7	16.1
250 X 250	3.0	15.35	10.5	13.8
	4.0	20.56	14.9	15.1
	5.0	23.13	17.0	16.4
255 X 255	3.0	15.66	10.7	14.1
	4.0	20.86	15.2	15.4
	5.0	23.41	17.3	16.7
260 X 260	3.0	15.97	10.9	14.4
	4.0	21.36	15.5	15.7
	5.0	23.89	17.6	17.0
265 X 265	3.0	16.28	11.1	14.7
	4.0	21.86	15.8	16.0
	5.0	24.37	17.9	17.3
270 X 270	3.0	16.59	11.3	15.0
	4.0	22.36	16.1	16.3
	5.0	24.85	18.2	17.6
275 X 275	3.0	16.90	11.5	15.3
	4.0	22.86	16.4	16.6
	5.0	25.33	18.5	17.9
280 X 280	3.0	17.21	11.7	15.6
	4.0	23.36	16.7	16.9
	5.0	25.81	18.8	18.2
285 X 285	3.0	17.52	11.9	15.9
	4.0	23.86	17.0	17.2
	5.0	26.29	19.1	18.5
290 X 290	3.0	17.83	12.1	16.2
	4.0	24.36	17.3	17.5
	5.0	26.77	19.4	18.8
295 X 295	3.0	18.14	12.3	16.5
	4.0	24.86	17.6	17.8
	5.0	27.25	19.5	19.1
300 X 300	3.0	18.45	12.5	16.8
	4.0	25.36	17.9	18.1
	5.0	27.73	19.8	19.4
305 X 305	3.0	18.76	12.7	17.1
	4.0	25.86	18.2	18.4
	5.0	28.21	20.0	19.7
310 X 310	3.0	19.07	12.9	17.4
	4.0	26.36	18.5	18.7
	5.0	28.69	20.2	20.0
315 X 315	3.0	19.38	13.1	17.7
	4.0	26.86	18.8	19.0
	5.0	29.17	20.4	20.3
320 X 320	3.0	19.69	13.3	18.0
	4.0	27.36	19.1	19.3
	5.0	29.65	20.7	20.6
325 X 325	3.0	19.99	13.5	18.3
	4.0	27.86	19.4	19.6
	5.0	30.13	20.9	20.9
330 X 330	3.0	20.30	13.7	18.6
	4.0	28.36	19.7	19.9
	5.0	30.61	21.1	21.2
335 X 335	3.0	20.61	13.9	18.9
	4.0	28.86	20.0	20.2
	5.0	31.09	21.4	21.5
340 X 340	3.0	20.92	14.1	19.2
	4.0	29.36	20.3	20.5
	5.0	31.57	21.8	21.8
345 X 345	3.0	21.23	14.3	19.5
	4.0	29.86	20.6	20.8
	5.0	32.05	22.1	22.1
350 X 350	3.0	21.54	14.5	19.8
	4.0	30.36	20.9	21.1
	5.0	32.61	22.4	22.4
355 X 355	3.0	21.85	14.7	20.1
	4.0	30.86	21.2	21.4
	5.0	33.09	22.8	22.7
360 X 360	3.0	22.16	14.9	20.4
	4.0	31.36	21.5	21.7
	5.0	33.57	23.0	23.0
365 X 365	3.0	22.47	15.1	20.7
	4.0	31.86	21.8	22.0
	5.0	34.05	23.4	23.3
370 X 370	3.0	22.78	15.3	21.0
	4.0	32.36	22.1	22.3
	5.0	34.53	23.9	23.6
375 X 375	3.0	23.09	15.5	21.3
	4.0	32.86	22.4	22.6
	5.0	34.99	24.1	23.9
380 X 380	3.0	23.40	15.7	21.6
	4.0	33.36	22.7	22.9
	5.0	35.47	24.6	24.2
385 X 385	3.0	23.71	15.9	21.9
	4.0	33.86	23.0	23.2
	5.0	35.95	24.9	24.5
390 X 390	3.0	24.02	16.1	22.2
	4.0	34.36	23.3	23.5
	5.0	36.43	25.2	24.8
395 X 395	3.0	24.33	16.3	22.5
	4.0	34.86	23.6	23.8
	5.0	36.91	25.5	25.1
400 X 400	3.0	24.64	16.5	22.8
	4.0	35.36	23.9	24.1
	5.0	37.39	25.8	25.4
405 X 405	3.0	24.95	16.7	23.1
	4.0	35.86	24.2	24.4
	5.0	37.87	26.1	25.7
410 X 410	3.0	25.26	16.9	23.4
	4.0	36.36	24.5	24.7
	5.0	38.35	26.4	26.0
415 X 415	3.0	25.57	17.1	23.7
	4.0	36.86	24.8	25.0
	5.0	38.83	26.7	26.3
420 X 420	3.0	25.88	17.3	24.0
	4.0	37.36	25.1	25.3
	5.0	39.31	27.0	26.6
425 X 425	3.0	26.19	17.5	24.3
	4.0	37.86	25.4	25.6
	5.0	39.79	27.3	26.9
430 X 430	3.0	26.50	17.7	24.6
	4.0	38.36	25.7	25.9
	5.0	40.27	27.6	27.2
435 X 435	3.0	26.81	17.9	24.9
	4.0	38.86	26.0	26.2
	5.0	40.75	27.9	27.5
440 X 440	3.0	27.12	18.1	25.2
	4.0	39.36	26.3	26.5
	5.0	41.23	28.2	27.8
445 X 445	3.0	27.43	18.3	25.5
	4.0	39.86	26.6	26.8
	5.0	41.71	28.5	28.1
450 X 450	3.0	27.74	18.5	25.8
	4.0	40.36	26.9	27.1
	5.0	42.19	28.8	28.4
455 X 455	3.0			

SQUARE BARS



DIMENSIONS, WEIGHTS & TOLERANCE OF SQUARES

SIZE(MM)	PERMISSIBLE DEVIATION (mm)	NOMINAL CROSS-SECTION (cm ²)	NOMINAL WEIGHT (kg/m)	NOMINAL SURFACE AREA (cm ² /m)
8	+ 0.4	0.64	0.502	320
10	+ 0.4	1.00	0.79	400
12	± 0.4	1.44	1.13	480
14	± 0.4	1.96	1.54	560
16	± 0.5	2.56	2.01	640
18	± 0.5	3.24	2.54	720
20	± 0.5	4.00	3.14	800
22	+ 0.5	4.84	3.80	880
25	± 0.5	6.25	4.91	1,000
30	± 0.6	9.00	7.07	1,200
35	± 0.6	12.25	9.62	1,400
40	± 0.8	16.00	12.56	1,600
50	± 0.8	25.00	19.63	2,000
60	± 0.8	36.00	28.26	2,400
70	± 0.8	49.00	38.47	2,800
80	± 1.0	64.00	50.24	3,200
90	± 1.0	81.00	63.59	3,600
100	± 1.0	100.00	78.50	4,000
110	± 1.2	121.00	94.99	4,400
120	± 1.2	144.00	113.04	4,800
130	± 1.2	169.00	132.67	5,200
150	± 1.4	225.00	176.63	6,000

QUALITY:

DIN 17100, ASTM A 36,
ASTM A 529 GR 60,
FEE 360 B, S235JR,
S275JR, S355JR
AND
INTERNATIONAL QUALITIES.



FLAT BARS



DIMENSIONS, WEIGHTS & TOLERANCES OF FLATS

WIDTH d (mm)	ALLOWED WIDTH DEVIATION (mm)	THICKNESS s (mm)																		
		3	4	5	6	6.5	7	8	9	10	11	12	13	14	15	16	17	18	20	
		PERMISSIBLE THICKNESS DEVIATION (mm)																		
		±0.3									±0.5									
		NOMINAL WEIGHT																		
10	±0.75	0.24	0.31	0.39	-	-	-	-	-	-	-	-	-	-	-	-	-	-	-	
11		0.24	0.35	0.43	0.52	-	-	-	-	-	-	-	-	-	-	-	-	-	-	-
12		0.28	0.38	0.47	0.57	-	-	-	-	-	-	-	-	-	-	-	-	-	-	-
13		0.31	0.41	0.51	0.61	0.66	0.71	0.82	0.92	-	-	-	-	-	-	-	-	-	-	-
14		0.33	0.44	0.55	0.66	-	0.77	0.88	-	-	-	-	-	-	-	-	-	-	-	-
15		0.35	0.47	0.59	0.71	-	0.82	0.94	-	1.18	-	-	-	-	-	-	-	-	-	-
16		0.38	0.50	0.63	0.75	0.82	0.88	1.00	1.13	1.26	1.38	-	-	-	-	-	-	-	-	-
17		0.40	0.53	0.67	0.80	-	0.93	1.07	-	-	1.47	-	-	-	-	-	-	-	-	-
18		0.42	0.57	0.71	0.85	0.92	0.99	1.13	1.27	1.41	1.55	-	-	-	-	-	-	-	-	-
19		0.45	0.60	0.75	0.90	-	1.04	1.19	1.34	-	1.64	-	-	1.94	-	-	-	-	-	-
20		0.47	0.63	0.79	0.94	1.02	1.10	1.26	1.41	1.57	-	-	1.88	2.06	-	2.36	-	-	-	-
22		0.52	0.69	0.86	1.04	1.12	1.21	1.38	-	1.73	1.90	2.07	2.25	2.42	2.59	-	-	2.94	-	-
25	0.59	0.79	0.98	1.13	1.28	1.37	1.57	-	1.96	-	2.36	2.55	2.75	2.94	3.14	-	-	-	-	
26	0.61	0.82	1.02	1.22	1.33	1.43	1.63	-	2.04	-	2.45	2.65	2.86	3.06	3.27	-	-	3.67	4.08	
28	0.66	0.88	1.10	1.32	1.43	1.54	1.76	-	2.20	-	2.64	2.86	3.08	-	3.52	-	-	3.96	-	
30	0.71	0.94	1.18	1.41	1.53	1.65	1.88	2.12	2.36	-	2.83	3.04	3.30	3.53	3.77	-	-	4.24	4.71	
32	0.75	1.00	1.26	1.51	1.63	-	2.01	-	2.51	-	3.01	3.27	3.52	3.77	4.02	-	-	-	5.02	
35	0.82	1.10	1.37	1.65	1.79	1.92	2.20	-	2.75	-	3.30	3.57	3.85	4.12	4.40	-	-	4.95	5.50	
38	0.89	1.19	1.49	1.79	1.94	-	2.39	-	2.98	-	3.58	3.88	4.18	4.47	4.77	-	-	-	5.97	
40	0.94	1.26	1.57	1.88	2.04	2.20	2.51	2.83	3.14	-	3.77	4.08	4.40	4.71	5.02	-	-	5.45	6.28	
45	1.06	1.41	1.77	2.12	2.30	2.47	2.83	-	3.53	-	4.24	4.59	4.95	5.30	5.65	-	-	-	7.07	
50	1.18	1.57	1.96	2.39	2.55	2.75	3.14	3.53	3.93	-	4.71	5.10	5.50	5.89	6.28	-	-	7.07	7.85	
55	1.30	1.73	2.16	2.59	2.81	-	3.45	-	4.32	-	5.18	5.61	6.04	6.48	6.91	-	-	7.77	8.64	
60	1.41	1.88	2.36	2.83	3.06	3.30	3.77	4.24	4.71	-	5.65	6.12	-	7.07	7.54	-	-	8.48	9.42	
65	1.53	2.04	2.55	3.06	3.32	-	4.08	4.59	5.10	-	6.12	6.63	-	7.65	8.16	-	-	-	10.20	
70	1.65	2.20	2.75	3.30	3.57	3.85	4.40	-	5.50	-	6.59	7.14	-	8.24	8.79	-	-	9.89	11.00	
75	1.77	2.36	2.94	3.53	3.83	-	4.71	-	5.89	-	7.07	7.65	-	8.83	9.42	-	-	-	11.80	
80	1.88	2.51	3.14	3.77	4.08	4.40	5.02	-	6.28	-	7.54	8.16	-	9.42	10.00	-	-	-	12.60	
90	2.12	2.83	3.53	4.24	4.59	-	5.65	6.36	7.07	7.77	8.48	9.18	-	10.60	11.30	-	-	12.70	14.10	
100	2.36	3.14	3.93	4.71	5.10	-	6.28	-	7.85	8.64	9.42	10.20	11.00	11.90	12.60	-	-	-	15.70	
110	2.59	3.45	-	-	-	-	6.91	7.77	8.64	9.50	10.40	11.20	12.10	13.00	13.80	-	-	-	17.30	
120	-	-	-	-	-	-	7.54	-	9.42	10.40	11.30	12.20	-	14.10	15.10	-	-	-	18.80	
130	-	-	-	-	-	-	8.16	9.18	10.20	11.20	12.20	13.30	14.30	15.30	16.30	-	-	-	20.40	
140	-	-	-	-	-	-	8.79	-	11.00	-	13.20	-	-	16.50	17.60	-	-	-	22.00	
150	-	-	-	-	-	-	9.42	-	11.80	13.00	14.10	15.30	16.50	17.70	18.80	-	-	-	23.60	



QUALITY:

DIN 17100, ASTM A 36, ASTM A 529 GR 60, FEE 360 B, S235JR, S275JR S355JR AND INTERNATIONAL QUALITIES.

ROUND BARS



QUALITY:

ROUND BARS – HOT ROLLED AND COLD ROLLED

DIN 17100, ASTM A 36, ASTM A 529 GR 60,
FEE 360 B, S235JR, S275JR, S355JR
AND INTERNATIONAL QUALITIES.

DIAMETER d (mm)	PERMISSIBLE DIAMETER DEVIATION (mm)	NOMINAL CROSSECTION (cm ²)	NOMINAL WEIGHT (kg/m)	NOMINAL SURFACE AREA (cm ² /m)	PERMISSIBLE OUT-OF- ROUDNESS (mm)
5	±0.4	0.20	0.15	157	0.64
6	±0.4	0.28	0.22	188	0.64
7	±0.4	0.38	0.30	220	0.64
8	±0.4	0.50	0.39	251	0.64
10	±0.4	0.785	0.617	314	0.64
12	±0.4	1.13	0.888	377	0.64
14	±0.4	1.54	1.21	440	0.64
16	±0.4	2.01	1.58	503	0.80
18	±0.5	2.54	2.00	565	0.80
20	±0.5	3.14	2.47	628	0.80
22	±0.5	3.8	2.98	691	0.80
25	±0.5	4.91	3.85	785	0.80
28	±0.6	6.16	4.83	880	0.96
30	±0.6	7.07	5.55	942	0.96
35	±0.6	9.62	7.55	1,100	0.96
40	±0.8	12.6	9.86	1,260	1.28
42	±0.8	13.85	10.90	1,320	1.28
45	±0.8	15.9	12.50	1,410	1.28
50	±0.8	19.6	15.40	1,570	1.28
55	±1.0	23.8	18.70	1,730	1.60
60	±1.0	28.3	22.20	1,880	1.60
65	±1.0	33.2	26.00	2,040	1.60
70	±1.0	38.5	30.20	2,200	1.60
75	±1.0	44.2	34.70	2,360	1.60
80	±1.0	50.3	39.50	2,510	1.60
85	±1.3	56.7	44.50	2,670	2.08
90	±1.3	63.6	49.90	2,830	2.08
95	±1.3	70.9	55.60	2,980	2.08
100	±1.3	78.5	61.70	3,140	2.08
110	±1.5	95	74.60	3,460	2.40
120	±1.5	113	88.80	3,770	2.40
150	±1.5	177	139.55	4,710	2.88
200	±1.5	314	248.1	6,280	2.88
250	±2.0	491	385.4	7,850	2.88
300	±12.0	707	554.9	9,420	2.88



IPN & UPN PROFILES

IPN QUALITY:

S235JR, S275JR, S355JR AND
INTERNATIONAL QUALITIES.

SIZES: 80mm - 500mm



IPN					
	h	b	t f	t w	weight
	mm	mm	mm	mm	kg/m
IPN	80	42		3.90	5.94
IPN	100	50	5.70	4.50	8.34
IPN	120	58	7.70	5.10	11.10
IPN	140	66	8.60	5.70	14.30
IPN	160	74	9.50	6.30	17.90
IPN	180	82	10.40	6.90	21.90
IPN	200	90	11.30	7.50	26.20
IPN	220	98	12.20	8.10	31.10
IPN	240	106	13.10	8.70	36.20
IPN	260	113	14.10	9.40	41.90
IPN	280	119	15.20	10.10	47.90
IPN	300	125	16.20	10.80	54.20
IPN	320	131	17.30	11.50	61.00
IPN	340	137	18.30	12.20	68.00
IPN	360	143	19.50	13.00	76.10
IPN	380	149	20.50	13.70	84.00
IPN	400	155	21.60	14.40	92.40
IPN	450	170	24.30	16.20	115.00
IPN	500	185	27.00	18.00	141.00
IPN	550	200	30.00	19.00	166.00



UPN QUALITY:

S235JR, S275JR, S355JR AND
INTERNATIONAL QUALITIES

SIZES: 30mm - 400mm



UPN		
DIMENSION (mm)	THICKNESS (mm)	WEIGHT (kg/m)
30 X 15	4	1.74
40 X 20	5	2.87
50 X 25	5	3.86
50 X 38	5	5.59
65 X 42	5.5	7.09
80 X 45	6	8.64
100 X 50	6	10.6
120 x 55	7	13.4
140 x 60	7	16
160 x 65	7.5	18.8
180 x 70	8	22
200 x 75	8.5	25.3
220 x 80	9	29.4
240 x 85	9.5	33.2
260 x 90	10	37.9
280 x 95	10	41.8
300 x100	10	46.2
320 x100	14	59.5
350 x100	14	60.6
380 x102	13.5	63.1
400 x110	14	71.8

H & I BEAMS

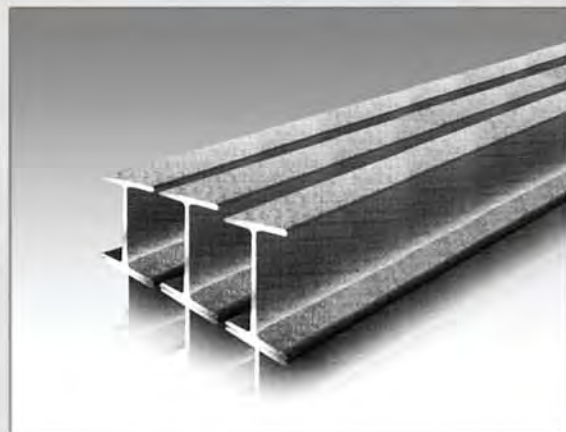
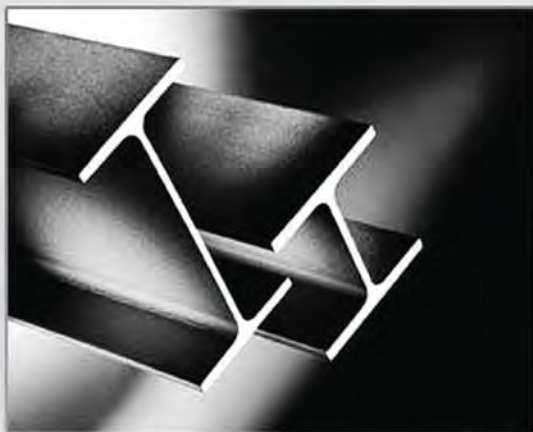


IPE / IPE A / IPE AA QUALITY:

Sizes: 80 mm to 750 mm

QUALITY: DIN 17100, ASTM A 36, ASTM A 529 GR 60, FEE 360 B, S235JR, S275JR, S355JR AND INTERNATIONAL QUALITIES.

	Weight kg/m	h mm	b mm	tw mm	tf mm	r mm
IPE A 100	6.9	98	55	3.6	4.7	7
IPE 100	8.1	100	55	4.1	5.7	7
IPE A 120	8.7	117.6	64	3.8	5.1	7
IPE 120	10.4	120	64	4.4	6.3	7
IPE A 140	10.5	137.4	73	3.8	5.6	7
IPE 140	12.9	140	73	4.7	6.9	7
IPE A 160	12.7	157	82	4.0	5.9	9
IPE 160	15.8	160	82	5.0	7.4	9
IPE A 180	15.4	177	91	4.3	6.5	9
IPE 180	18.8	180	91	5.3	8.0	9
IPE A 200	18.4	197	100	4.5	7.0	12
IPE 200	22.4	200	100	5.6	8.5	12
IPE A 220	22.2	217	110	5.0	7.7	12
IPE 220	26.2	220	110	5.9	9.2	12
IPE A 240	26.2	237	120	5.2	8.3	15
IPE 240	30.7	240	120	6.2	9.8	15
IPE A 300	36.5	297	150	6.1	9.2	15
IPE 300	42.2	300	150	7.1	10.7	15
IPE A 400	57.4	397	180	7.0	12.0	21
IPE 400	66.3	400	180	8.6	13.5	21
IPE A 500	79.4	497	200	8.4	14.5	21
IPE 500	90.7	500	200	10.2	16.0	21



T-PROFILES



	T PROFILES	
DIMENSION (mm)	THICKNESS (mm)	WEIGHT kg/m
20 x 20	3	0.88
25 x 25	3	1.13
30 x 30	4	1.79
40 x 40	4	2.40
50 x 50	5	3.80



QUALITY:

DIN 17100, ASTM A 36, ASTM A 529 GR 60, FEE 360 B, S235JR, S275JR, S355JR AND INTERNATIONAL QUALITIES.

WIRE ROD



DIAMETERS, WEIGHTS & TOLERANCE OF WIRE ROD

DIAMETER d (mm)	PERMISSIBLE DEVIATION (mm)	NOMINAL CROSS - SECTION (cm ²)	NOMINAL WEIGHT (kg/m)	PERMISSIBLE OUT-OF- ROUNDNESS (mm)
5.5	0.3	0.238	0.187	0.48
6.0		0.283	0.222	
6.5		0.332	0.260	
7.0	0.4	0.385	0.302	0.64
8.0		0.503	0.395	
9.0		0.636	0.499	
10.0		0.785	0.617	
11.0		0.950	0.746	
12.0		1,130	0.888	
14.0	0.5	1,540	1,210	0.80
16.0		2,010		

Grades: Mild Steel / High Carbon, Medium Carbon,
Low Carbon / Electrode



STEELWIRE products

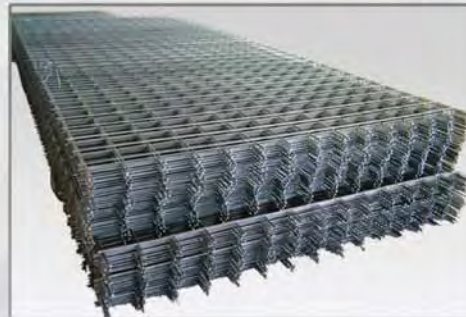
- Galvanized Steel Strand, H.B. Wire for Nail, Cable , Armour Wire (Round)ACSR Core Wire, PC Strand
- Standard: IS 280, IS 2141, IS 12776, ASTM A473, A 363, A 510M, SAE 1006, BS 183, DIN 48200, 48201, 48202, VEDO 210, BS 1441, IS 398 2&5, ASTM B 498, BS 4565
- Size: 0.63 - 12.50mm



• Nails



• Wire Mesh



STEEL BILLET



DIMENSIONS (mm)

- 100X100
- 120X120
- 130X130
- 140X140
- 150X150
- 200X200

QUALITIES

SAE	EN 10025	CK
1006	S235JR	15
1008	S275JR	30
1010	S355JR	45
1015	E295	60
1020	E335	
1030	E360	
1035	ST	
1040	37-2	
1045	44-2	ASTM A706
1050	50-3	ASTM A 572
1060	52-3	55CR3
ASTM A615	70-2	60SI MN5
GR40	BS	50CRV4
GR60	GR500B	51CRMV4
GR75	GR460B	51CRMOV4

*Other chemistries can be produced according to customer's request
LENGTH: 4-12 METERS

COILS & SHEETS

HOT ROLLED COILS & SHEETS

Qualities : In various International Standards as DIN, ASTM, JIS, SAE etc.

Thickness : From 1.20mm to 200mm

Width : From 500mm to 6000mm

Coil Weight : please ask us for details.

Length : please ask us for details.



COLD ROLLED COILS & SHEETS

Qualities : In various international standards as DIN, ASTM, JIS, SAE etc.

Thickness : From 0.30mm to 2.00mm

Width : From 700mm to 1500mm

Coil Weight : please ask us for details.

Length : please ask us for details.



GALVANIZED COILS & SHEETS

Qualities : In various international standards as DIN, ASTM, JIS, SAE etc.

Thickness : From 0.20mm to 2.00mm

Width : From 700mm to 1550mm

Coil Weight : please ask us for stock details

Length : please ask us for details.



PRE-PAINTED GALVANIZED COILS & SHEETS

Material Thickness (mm) - 0.20-1.20mm

Maximum Width (mm) - 1550mm



SLITTED STEEL STRIPS

The slitting process can be performed to a minimum width of 20 mm. and an inner diameter of 200 mm. Vertical and horizontal packaging can be made according to the customer requirements.



TRAPEZOIDAL SHEETS

Corrugated sheets are available in galvanized, painted or embossed forms. Corrugated sheets are manufactured in 18/76,2 form. Material thickness is maximum 1,00 mm. Cut-to-length may be produced according to the customer requirements. Formed width is 875 mm. They may be manufactured from 800 mm to 914 mm width according to the requirements.





COILS & SHEETS

CORRUGATED SHEETS

Corrugated sheets are available in galvanized, painted or embossed forms. Corrugated sheets are manufactured in 18/76,2 form. Material thickness is maximum 1,00 mm. Cut-to-length may be produced according to the customer requirements. Formed width is 875 mm. They may be manufactured from 800 mm to 914 mm width according to the requirements.



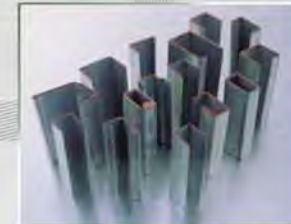
SINUSOIDAL SHEETS

Sinusoidal sheets are manufactured in 9/31,8 form. Material thickness is maximum 0,40 mm. Cut-to-length may be produced in 1600-3000 mm range. Formed width is 834 mm, useful area width is 810 mm +25/-15mm. They may be produced from 762 mm to 914 mm width according to the requirements.



STRUCTURAL / SUPPORT PROFILES

It is the window support or non-welded structure profile form of galvanized products. After the requirements are carefully reviewed, products can be manufactured by making special patterns in necessary situations. Products may be manufactured in thousands of types.



RIDGE

It is the window support or non-welded structure profile form of galvanized products. After the requirements are carefully reviewed, products can be manufactured by making special patterns in necessary situations. Products may be manufactured in thousands of types.



EMBOSSED SHEETS

This is the form in which galvanized or painted coils are processed through patterned rollers and their surface shapes are modified. Embossed coils can be recoiled or may be produced in cut, slitted, trapezoidal and corrugated forms. Material thickness is maximum 0,55mm.



CHEQUERED PLATE

Qualities : In various International Standards as DIN.ASTM, JIS , SAE etc.

Thickness : From 1.50mm to 8,00mm

Width : From 700mm to 1475mm

Length : please ask us for details.



HOLLOW SECTIONS

WATER AND GAS PIPES

Qualities: DIN 2440, 2441, BS 1387, ASTM A 53

Types: Threaded and coupled, plain end light, medium, heavy series galvanised and black

Size: From 8mm to 150mm From 3/8inch to 6inch

Outside Diameter: From 13.2mm to 165.1mm

Thickness: From 1.8mm to 5.4mm

Length: As per customer's request



SQUARE HOLLOW SECTIONS

Qualities: DIN EN 10219-2, DIN 59411, ASTM A 500, TSE 5317

Size: From 10x10mm to 250x250mm

Wall Thickness: From 1.0mm to 6.0mm

Length: As per customer's request



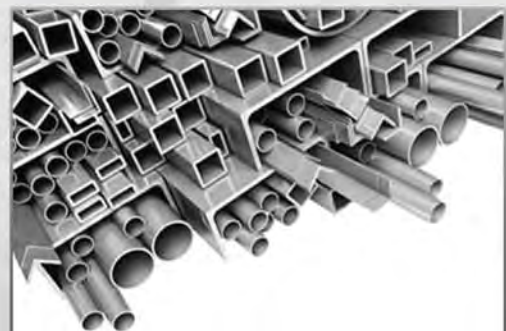
RECTANGULAR HOLLOW SECTIONS

Qualities: DIN EN 10219-2, DIN 59411, ASTM A 500, TSE 5317

Size: From 20x10mm to 180x250mm

Wall Thickness: From 1.0mm to 5.0mm

Length: As per customer's request



CIRCULAR HOLLOW SECTIONS

Qualities: DIN EN 10219-2, DIN 59411, ASTM A 500, TSE 5317

Outside Diameter: From 21.3mm to 114.3mm

Wall Thickness: From 2.0mm to 5.0mm

Length: As per customer's request



STEEL SCRAP



SPECIFICATIONS: HMS 1&2 (80/20) IRSI 200-206

Steel scrap defined as HMS 1 & 2 in an 80/20 mix under IRSI codes 200 through 206 . Non-metal impurities total 1% (one percent) or less - no radiation, arms, ammunition, bombs, shells, mines, cartridges, sealed gas cylinders. High carbon steel is not included in this scrap - we sell that as a separate item.

Free from mud, dust, fluff, non ferrous inclusions, excessive rust and other impurities. Free from war and explosives, shells, cartridges, other arms and ammunitions used or otherwise and any closed containers. Free from any radioactive materials, any harmful chemicals, substances, and coatings, any organic waste and any other harmful substances. Dirt, dust rust, fluff and other impurities not allowed over 1%.



C O N T



ITALY

BULGARIA

GREECE

MEDITERRANEAN SEA

ISTANBUL

TURKEY

HATAY

BLACK SEA

RUSSIA

GEORGIA

SYRIA

IRAQ

IRAN

corbus

corbus

A C T S



TURKEY

corbus
corbus metal iç ve dış tic. ltd. şti.



corbus
corbus çelik san. ve tic.a.ş

HEAD OFFICE

İnebolu Sk. No.63/1 Kabataş 34427
İstanbul / Turkey
T. +90 212 245 88 89 (pbx) / F. +90 212 245 77 99
info@corbus.com.tr / www.corbus.com.tr

FACTORY

Payas Organize Sanayi Bölgesi Haddeciler Caddesi
No.71Payas, Dört Yol 31900 Hatay / Turkey
T. +90 326 755 48 00 (pbx) / F. +90 326 755 31 00
info@corbus.com.tr / www.corbus.com.tr

HARD WORK.

A philosophy that defines us.

